

Baulkham Hills

 4 bedrooms  2.5 bathrooms  Double Garage  199.30 Sq M



TYPE E

INCLUSIONS:

Fixed site cost and BASIX;
2600 mm ceiling ground floor;
Ducted air conditioner;
Down-light package to
Kitchen/Living;
Caeserstone kitchen bench top;
Carpet to bedrooms;
Tiles to Living areas;
Mirrored Sliding robes;
Clothes line and Letter box;
Turf front and backyard;
Colored driveway;
Six months completion;



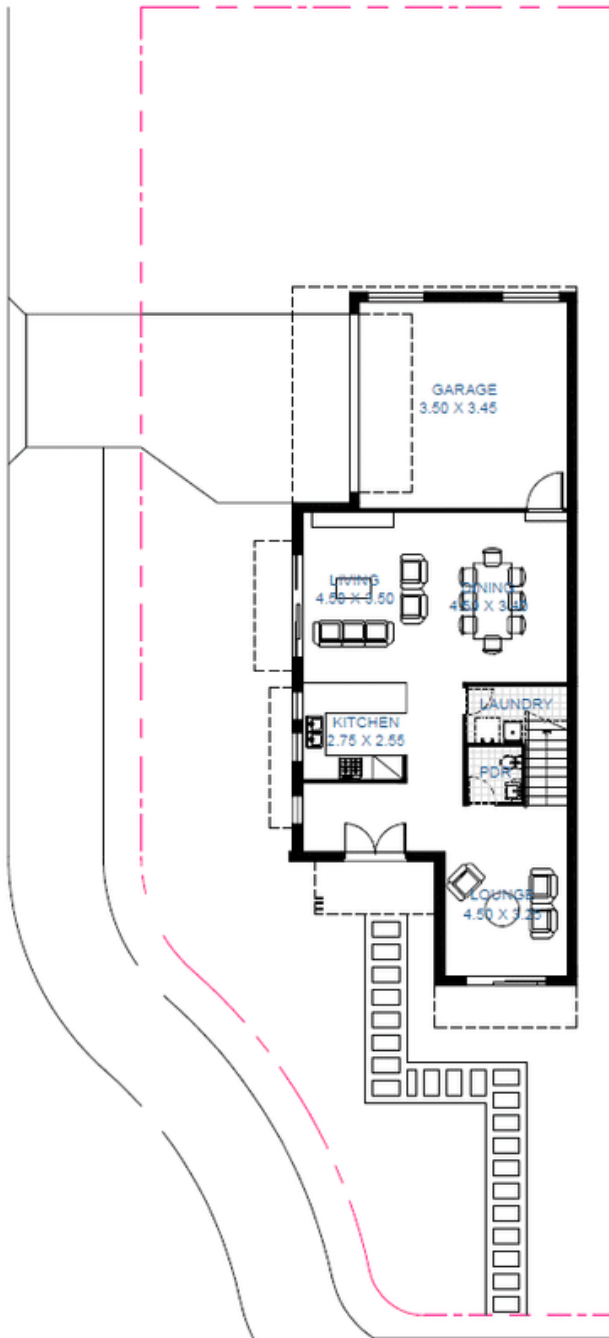
KEY FACTS

- ✓ Double storey
- ✓ 4 bedrooms
- ✓ 2.5 bathrooms
- ✓ Double Garage
- ✓ 199.30 Sq M
- ✓ Exterior width 7.50m
- ✓ Exterior length 19.54m

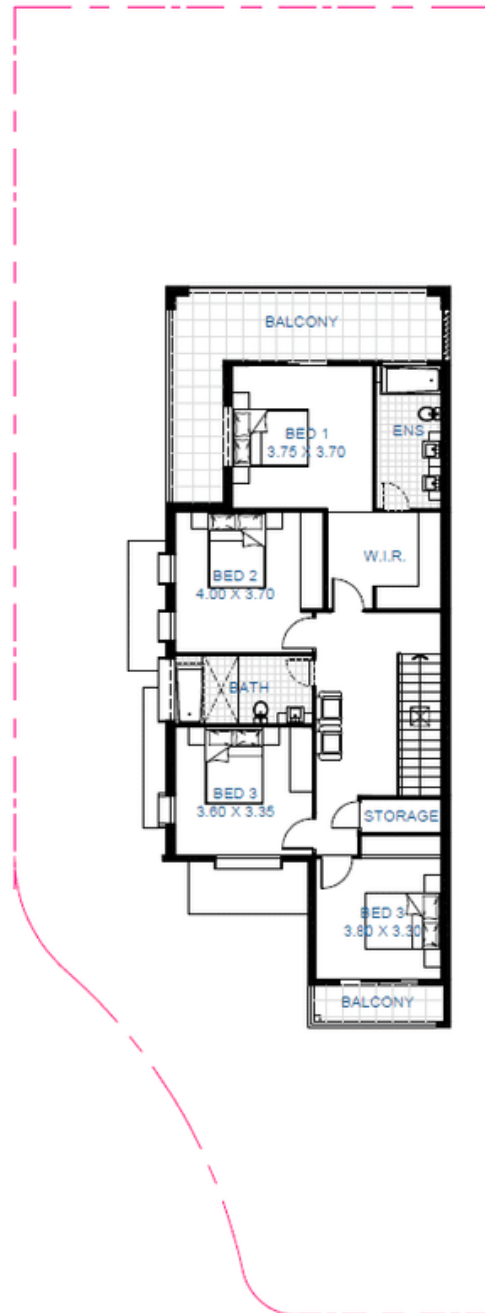
FLOOR AREAS

Ground Floor	103.90 sqm
First floor	95.40 sqm
Garage	30.25 sqm

Total Floor Area 199.30 sqm



Ground floor



First floor

↔ 7.50 M
↑↓ 19.54 M